

# **TRAVIS COUNTY ESD #3 BOARD MEETING**

## **TABLE OF CONTENTS**

January 27, 2025

|  |                      |
|--|----------------------|
| <b>1. Agenda</b>                         | <b>page 1</b>        |
| <b>2. Minutes from December 16, 2024</b> | <b>pages 2 - 3</b>   |
| <b>3. Treasurer's Report</b>             | <b>pages 4 - 14</b>  |
| <b>4. Payments over \$2,000</b>          | <b>page 15</b>       |
| <b>5. Investment Officer's Report</b>    | <b>page 16</b>       |
| <b>6. Sales Tax Statistics</b>           | <b>pages 17 - 25</b> |
| <b>7. Chief's Monthly Status Report</b>  | <b>pages 26 - 31</b> |

NOTICE IS HEREBY GIVEN that the Board of Emergency Services Commissioners of Travis County Emergency Services District No. 3 (TCESD3) will hold a regular and publicized meeting at 7:00 p.m. on Monday, January 27, 2025, in the Community Room of TCESD3 Station 302 located at 4111 Barton Creek Blvd., Austin, Travis County, Texas. The subject of and matters to be considered at said meeting include, among other business, the following:

1. Call to order.
2. Proof of quorum.
3. General visitor communications: Receive comments from visitors.
4. Review and approve the minutes of the December 16, 2024 regular meeting of the District.
5. Review and approval of the Treasurers' monthly report for December 2024.
6. Approve payments over \$2,000 from December 13, 2024, to January 23, 2025.
7. Review and approve Investment Officers Report ending December 2024
8. Review Sales Tax Statistics
9. Review of Chief's Monthly Status Reports
  1. Significant incident runs;
  2. Statistics;
  3. Special Project Updates
10. Other Business:
  1. Report on any ESDCC activities. Announcement of the next ESDCC meeting dates.
  2. Commissioner Announcements (no action will be taken on any such announcements).
11. Announcement of future meeting dates of the Board of ESD 03 Commissioners.
12. Adjourn.

By: \_\_\_\_\_ Herb Holloway, Business Manager

NOTE: The Board of Emergency Services Commissioners reserves the right to adjourn into Closed Meeting at any time during the course of this meeting to discuss any of the agenda items listed above as authorized by Texas Government Code, Section 551.071 (Consultation with Attorney), 551.072 (Deliberations about Real Property), 551.073 (Deliberations about Gifts and Donations), 551.074 (Personnel Matters), and 551.076 (Deliberations about Security Devices) or other applicable law. Travis County Emergency Services District Number 3 is committed to compliance with the Americans with Disabilities Act. Reasonable modification and equal access to communications will be provided upon request. Please call the District Administrative Office at 288-5534 for information. Hearing impaired or speech disabled persons equipped with telecommunication devices for the deaf may call the statewide Relay Program at 1-800-735-2988 or by dialing '711'. Visitor Communications are regular agenda items at monthly meetings of the Board of Emergency Services Commissioners of Travis County Emergency Services District Number 3. Visitors who wish to speak under Visitor's Communications must sign up before the meeting is called to order. Each person, organization or group wishing to address the Board will be allowed a maximum of three (3) minutes to speak on items on the agenda or other business of the District. Speakers may register in person at the posted location of the meeting, starting 30 minutes prior to the start of the meeting and using the form provided. The speaker will give his/her name, address, organizational affiliation, if any, and indicate the subject he/she intends to address. The Board welcomes citizen comment on any issue, but the Open Meetings Act prohibits any board action on issues not posted on the agenda. The District reserves the right to terminate any presentation by a speaker if it is disruptive of the good conduct of the meeting, or is in violation of law.

The undersigned affirms and states that he posted or caused to be posted a true and correct copy of the foregoing notice at a place convenient to the public at the Travis County ESD3 Administrative Office, 4111 Barton Creek Boulevard, Travis County, Texas, a location within said Travis County Emergency Services District Number 3 at \_\_\_\_\_ .M. on January 23, 2025.

By: \_\_\_\_\_ Herb Holloway, Business Manager

# **Minutes of Travis County Emergency Services District #3**

---

## **December 16, 2024**

Attached to and incorporated into these minutes is a copy of the official agenda for the December 16, 2024 meeting.

Under Agenda Item 1 & 2: Commissioner President Edd New called the Travis County Emergency Services District #3 (TCESD# 3, the District) Board of Commissioners' regular meeting to order at 7:05 p.m. A quorum was established with Commissioners John Villanacci, David Detwiler, Carroll Knight, and Matt Escobedo in attendance. Fire department personnel present at the meeting included: Chief Wittig, Business Manager Herb Holloway, and Firefighters Torres and Barfield.

Under Agenda Item 3: There were no comments.

Under Agenda Item 4: The minutes of the November 25, 2024 Regular meeting were reviewed. Commissioner Escobedo moved to approve. Commissioner Detwiler seconded the motion, which was carried unanimously.

Under Agenda Item 5: The Treasurers Report ending November 2024 was reviewed. Commissioner Knight moved to approve. Commissioner Detwiler seconded the motion, which was carried unanimously.

Under Agenda Item 6: Checks over \$2,000 from November 22 to December 12, 2024 were reviewed. Commissioner Escobedo moved to approve. Commissioner Detwiler seconded the motion, which was carried unanimously.

Under Agenda Item 7: Chief Wittig presented the Sales Tax reports.

Under Agenda Item 8: Chief Wittig presented the Monthly Status Report

Under Agenda Item 9: No announcement made.

Under Agenda Item 10: It was announced that the next REGULAR Board meetings of TCESD #3 would be held on January 27, February 24, and March 24, 2025 at Station 302.

Under Agenda Item 11: Meeting was adjourned at 7:48 p.m.

NOTICE IS HEREBY GIVEN that the Board of Emergency Services Commissioners of Travis County Emergency Services District No. 3 (TCESD3) will hold a regular and publicized meeting at 7:00 p.m. on Monday, November 25, 2024 in the Community Room of TCESD3 Station 302 located at 4111 Barton Creek Blvd., Austin, Travis County, Texas. The subject of and matters to be considered at said meeting include, among other business, the following:

1. Call to order.
2. Proof of quorum.
3. General visitor communications: Receive comments from visitors.
4. Review and approve the minutes of the October 28, 2024 regular meeting of the District.
5. Review and approval of the Treasurers' monthly report for October 2024.
6. Approve payments over \$2,000 from October 24th to November 21, 2024.
7. Review Sales Tax Statistics
8. Review of Chief's Monthly Status Reports
  1. Significant incident runs;
  2. Statistics;
  3. Special Project Updates
9. Other Business:
  1. Report on any ESDCC activities. Announcement of the next ESDCC meeting dates.
  2. Commissioner Announcements (no action will be taken on any such announcements).
10. Announcement of future meeting dates of the Board of ESD 03 Commissioners.
11. Adjourn.

By: \_\_\_\_\_ Herb Holloway, Business Manager

NOTE: The Board of Emergency Services Commissioners reserves the right to adjourn into Closed Meeting at any time during the course of this meeting to discuss any of the agenda items listed above as authorized by Texas Government Code, Section 551.071 (Consultation with Attorney), 551.072 (Deliberations about Real Property), 551.073 (Deliberations about Gifts and Donations), 551.074 (Personnel Matters), and 551.076 (Deliberations about Security Devices) or other applicable law. Travis County Emergency Services District Number 3 is committed to compliance with the Americans with Disabilities Act. Reasonable modification and equal access to communications will be provided upon request. Please call the District Administrative Office at 288-5534 for information. Hearing impaired or speech disabled persons equipped with telecommunication devices for the deaf may call the statewide Relay Program at 1-800-735-2988 or by dialing '711'. Visitor Communications are regular agenda items at monthly meetings of the Board of Emergency Services Commissioners of Travis County Emergency Services District Number 3. Visitors who wish to speak under Visitor's Communications must sign up before the meeting is called to order. Each person, organization or group wishing to address the Board will be allowed a maximum of three (3) minutes to speak on items on the agenda or other business of the District. Speakers may register in person at the posted location of the meeting, starting 30 minutes prior to the start of the meeting and using the form provided. The speaker will give his/her name, address, organizational affiliation, if any, and indicate the subject he/she intends to address. The Board welcomes citizen comment on any issue, but the Open Meetings Act prohibits any board action on issues not posted on the agenda. The District reserves the right to terminate any presentation by a speaker if it is disruptive of the good conduct of the meeting, or is in violation of law.

The undersigned affirms and states that he posted or caused to be posted a true and correct copy of the foregoing notice at a place convenient to the public at the Travis County ESD3 Administrative Office, 4111 Barton Creek Boulevard, Travis County, Texas, a location within said Travis County Emergency Services District Number 3 at \_\_\_\_\_ .M. on November 21, 2024.

By: \_\_\_\_\_ Herb Holloway, Business Manager

## NOTES TO THE FINANCIAL STATEMENTS

- 1) Balance Sheet – The District holds \$2,565,620 more in cash than last year.
- 2) Treasury Bills - Change in market values from the prior month increased by \$16,150.
- 3) Revenue & Expense – December 2024 only. Emergency Response 600 was \$37,384 higher last year due to the purchase of 37 Ballistic Vests. Human Resources 640 was \$101,567 higher this year due primarily due to the catch-up in Health Insurance payment.
- 4) Revenue & Expense Year to Date had a net revenue of \$1,368,539 compared to last years net revenue of \$290,010 or a \$1,078,528 total difference.
- 5) Budget vs. Actual for the three months is tracking positive on nearly all accounts.
- 6) Property Tax Revenue was strong for December collecting \$1,141,604. YTD we have collected 37% of the 2024-2025 Tax Levy.
- 7) Checks over \$2,000 are self-explanatory.

**Travis County ESD#3**  
**Balance Sheet Prev Year Comparison**  
As of December 31, 2024

|                                   | <b>Dec 31, 24</b>    | <b>Dec 31, 23</b>    | <b>\$ Change</b>    |
|-----------------------------------|----------------------|----------------------|---------------------|
| <b>ASSETS</b>                     |                      |                      |                     |
| <b>Current Assets</b>             |                      |                      |                     |
| <b>Checking/Savings</b>           |                      |                      |                     |
| 112 - Charles Swab - Cash Sweep   | 44,642.93            | 0.00                 | 44,642.93           |
| 113 - Treasury Bills - RESERVE    | 6,058,258.14         | 2,988,453.00         | 3,069,805.14        |
| 110 - WF ADVISORS - Cash Sweep    | 6,086.99             | 233,546.07           | -227,459.08         |
| 100 WF Money Market 8960          | 2,003,804.22         | 3,389,536.10         | -1,385,731.88       |
| 102 WF Checking Plus 8760         | 314,749.87           | 161,444.04           | 153,305.83          |
| 103 WF RESERVE Savings 7928       | 812,521.84           | 804,398.10           | 8,123.74            |
| 104 WF General CDs                | 1,695,000.00         | 1,225,000.00         | 470,000.00          |
| 105 WF RESERVE CDs                | 960,000.00           | 980,000.00           | -20,000.00          |
| 107 WF 2005 & 2013 Bond Debt      | 113,276.67           | 27,417.06            | 85,859.61           |
| 108 TexPool Investment 001        | 6,620,292.27         | 6,287,240.91         | 333,051.36          |
| 109 TexPool RESERVE 002           | 676,294.91           | 642,272.02           | 34,022.89           |
| 115 Petty Cash                    | 145.00               | 145.00               | 0.00                |
| <b>Total Checking/Savings</b>     | <b>19,305,072.84</b> | <b>16,739,452.30</b> | <b>2,565,620.54</b> |
| <b>Accounts Receivable</b>        |                      |                      |                     |
| 125 Accounts Receivable           | 159,635.95           | 63,430.55            | 96,205.40           |
| <b>Total Accounts Receivable</b>  | <b>159,635.95</b>    | <b>63,430.55</b>     | <b>96,205.40</b>    |
| <b>Other Current Assets</b>       |                      |                      |                     |
| Due from Gen. Fund to Debt Serv   | 9,592.00             | 9,592.00             | 0.00                |
| 123 - Sales Tax Receivable        | 1,045,090.82         | 1,045,090.82         | 0.00                |
| 1021 Texas Compt. Reserve Acct    | 11,237.19            | 10,776.39            | 460.80              |
| 120 A/R Property Taxes 1yr +      | 88,448.18            | 88,448.18            | 0.00                |
| 121 Allowance for Doubtful A/Cs   | -10,051.00           | -10,051.00           | 0.00                |
| <b>Total Other Current Assets</b> | <b>1,144,317.19</b>  | <b>1,143,856.39</b>  | <b>460.80</b>       |
| <b>Total Current Assets</b>       | <b>20,609,025.98</b> | <b>17,946,739.24</b> | <b>2,662,286.74</b> |
| <b>Fixed Assets</b>               |                      |                      |                     |
| Land and Land Improvements        | 1,350,661.00         | 1,350,661.00         | 0.00                |
| Fire Trucks and Vehicles          | 3,630,794.70         | 3,630,794.70         | 0.00                |
| Office and Other Equipment        | 827,920.42           | 827,920.42           | 0.00                |
| Buildings                         | 7,196,899.73         | 7,196,899.73         | 0.00                |
| Accumulated Depreciation          | -5,175,324.15        | -5,175,324.15        | 0.00                |
| <b>Total Fixed Assets</b>         | <b>7,830,951.70</b>  | <b>7,830,951.70</b>  | <b>0.00</b>         |
| <b>TOTAL ASSETS</b>               | <b>28,439,977.68</b> | <b>25,777,690.94</b> | <b>2,662,286.74</b> |

Travis County ESD#3  
**Balance Sheet Prev Year Comparison**  
As of December 31, 2024

|  | <b>Dec 31, 24</b>    | <b>Dec 31, 23</b>    | <b>\$ Change</b>    |
|--|----------------------|----------------------|---------------------|
| <b>LIABILITIES &amp; EQUITY</b>        |                      |                      |                     |
| <b>Liabilities</b>                     |                      |                      |                     |
| <b>Current Liabilities</b>             |                      |                      |                     |
| <b>Other Current Liabilities</b>       |                      |                      |                     |
| Due to Debt Serv. from Gen. Fun        | 9,592.00             | 9,592.00             | 0.00                |
| 200 Deferred Revenue - Prop Tax        | 88,448.18            | 88,448.18            | 0.00                |
| 260 Accrued salaries payable           | 221,620.57           | 221,574.45           | 46.12               |
| <b>Total Other Current Liabilities</b> | <b>319,660.75</b>    | <b>319,614.63</b>    | <b>46.12</b>        |
| <b>Total Current Liabilities</b>       | <b>319,660.75</b>    | <b>319,614.63</b>    | <b>46.12</b>        |
| <b>Long Term Liabilities</b>           |                      |                      |                     |
| Accrued Vacation Payable               | 360,021.00           | 360,021.00           | 0.00                |
| 2013 Limited Bonds                     | 80,000.00            | 165,000.00           | -85,000.00          |
| <b>Total Long Term Liabilities</b>     | <b>440,021.00</b>    | <b>525,021.00</b>    | <b>-85,000.00</b>   |
| <b>Total Liabilities</b>               | <b>759,681.75</b>    | <b>844,635.63</b>    | <b>-84,953.88</b>   |
| <b>Equity</b>                          |                      |                      |                     |
| Investment in Fixed Assets             | 8,552,452.61         | 8,467,452.61         | 85,000.00           |
| Fund Balance - Unassigned              | 10,091,787.50        | 10,091,787.50        | 0.00                |
| Fund Balance - Assigned                | 7,667,516.71         | 6,083,804.45         | 1,583,712.26        |
| Net Revenue                            | 1,368,539.11         | 290,010.75           | 1,078,528.36        |
| <b>Total Equity</b>                    | <b>27,680,295.93</b> | <b>24,933,055.31</b> | <b>2,747,240.62</b> |
| <b>TOTAL LIABILITIES &amp; EQUITY</b>  | <b>28,439,977.68</b> | <b>25,777,690.94</b> | <b>2,662,286.74</b> |

## TCESD # 3 Certificate of Deposit Details

### RESERVE SAVINGS CD's

| #    |              | Bought   | Mature   |
|------|--------------|----------|----------|
| XJX1 | \$235,000.00 | 10/31/24 | 10/31/25 |
| P3X7 | \$245,000.00 | 10/9/24  | 4/9/25   |
| QEW4 | \$245,000.00 | 10/9/24  | 6/9/25   |
| LPS7 | \$235,000.00 | 10/31/24 | 10/31/25 |

### GENERAL SAVINGS CD's

| #    |              | Bought   | Mature   |
|------|--------------|----------|----------|
| UCU0 | \$245,000.00 | 6/5/24   | 6/5/25   |
| BTB7 | \$245,000.00 | 3/20/24  | 3/19/25  |
| 3HLO | \$245,000.00 | 6/11/24  | 4/11/25  |
| VUY3 | \$245,000.00 | 6/11/24  | 6/11/25  |
| KDH8 | \$235,000.00 | 11/6/24  | 11/6/25  |
| 3KV2 | \$245,000.00 | 3/11/24  | 9/11/25  |
| PCP2 | \$235,000.00 | 11/27/24 | 11/26/25 |

\$960,000.00

**Yearly Return**

|      |                 |
|------|-----------------|
| XJX1 | Bank of America |
| P3X7 | Mizuho Bank     |
| QEW4 | Northern Bank   |
| LPS7 | BMO Bank        |

\$1,695,000.00

**Yearly Return**

|      |                     |
|------|---------------------|
| UCU0 | Charles Schwab Bank |
| BTB7 | Beal Bank           |
| 3HLO | Cross River Bank    |
| VUY3 | Goldman Sachs Bank  |
| KDH8 | US Bank             |
| 3KV2 | Valley Natl Bank    |
| PCP2 | Finwise Bank        |

**\$83,205**

**\$39,604**



| Total Debt Repayment Schedule |                      |          |         |             |          |            |             |           |            |              |            |              |              |            |              |
|-------------------------------|----------------------|----------|---------|-------------|----------|------------|-------------|-----------|------------|--------------|------------|--------------|--------------|------------|--------------|
| Date                          | Firetrucks and Tower |          |         | Series 2003 |          |            | Series 2005 |           |            | Series 2013  |            |              | TOTAL        |            |              |
|                               | Principal            | Interest | Total   | Principal   | Interest | Total      | Principal   | Interest  | Total      | Principal    | Interest   | Total        | Principal    | Interest   | Total        |
| 3/1/2013                      |                      |          |         |             |          |            |             |           |            |              |            |              |              |            |              |
| 3/2/2013                      | 75,858               | 15,124   | 90,983  |             |          |            |             |           |            |              |            |              |              |            |              |
| 7/17/2013                     | 24,672               | 15,244   | 39,917  |             |          |            |             |           |            |              |            |              |              |            |              |
| 9/1/2013                      | 165,000              | 3,011    | 168,011 | 65,000      | 4,100    | 69,100     | 50,000      | 38,975    | 88,975     | 280,000      | 46,086     | 326,086      |              |            | 474,058      |
| 3/1/2014                      |                      |          |         |             | 2,800    | 2,800      |             | 38,475    | 38,475     |              | 41,275     | 41,275       |              |            |              |
| 7/17/2014                     | 25,477               | 14,440   | 39,917  |             |          |            |             |           |            | 25,477       | 14,440     | 39,917       |              |            |              |
| 3/2/2014                      | 79,385               | 11,597   | 90,983  |             |          |            |             |           |            | 79,385       | 11,597     | 90,983       |              |            |              |
| 9/1/2014                      |                      |          |         | 70,000      | 2,800    | 72,800     | 195,000     | 38,475    | 233,475    | 265,000      | 41,275     | 306,275      |              |            | 478,450      |
| 3/1/2015                      |                      |          |         |             | 1,400    | 1,400      |             |           |            |              | 36,525     | 37,925       |              |            |              |
| 3/2/2015                      | 83,077               | 7,905    | 90,983  |             |          |            |             |           |            | 83,077       | 7,905      | 90,983       |              |            |              |
| 7/17/2015                     | 26,307               | 13,610   | 39,917  |             |          |            |             |           |            | 26,307       | 13,610     | 39,917       |              |            |              |
| 9/1/2015                      |                      |          |         | 70,000      | 1,400    | 71,400     | 200,000     | 36,525    | 236,525    | 270,000      | 37,925     | 307,925      |              |            | 476,750      |
| 3/1/2016                      |                      |          |         |             |          |            |             |           |            |              | 34,525     | 34,525       |              |            |              |
| 3/2/2016                      | 86,940               | 4,042    | 90,983  |             |          |            |             |           |            | 86,940       | 4,042      | 90,983       |              |            |              |
| 6/1/2016                      | 391,799              | 11,353   | 403,152 |             |          |            |             |           |            | 391,799      | 11,353     | 403,152      |              |            |              |
| 9/1/2016                      |                      |          |         | 280,000     |          |            |             |           |            | 280,000      |            |              |              |            | 843,185      |
| 3/1/2017                      |                      |          |         |             |          |            |             |           |            |              | 31,725     | 31,725       |              |            |              |
| 3/1/2017                      |                      |          |         |             |          |            | 280,000     | 31,725    | 311,725    | 280,000      | 31,725     | 311,725      |              |            | 343,450      |
| 3/1/2018                      |                      |          |         |             |          |            |             |           |            |              | 28,925     | 28,925       |              |            |              |
| 9/1/2018                      |                      |          |         |             |          |            | 290,000     | 28,925    | 318,925    | 290,000      | 28,925     | 318,925      |              |            | 347,850      |
| 3/1/2019                      |                      |          |         |             |          |            |             |           |            |              | 26,025     | 26,025       |              |            |              |
| 9/1/2019                      |                      |          |         |             |          |            | 300,000     | 26,025    | 326,025    | 300,000      | 26,025     | 326,025      |              |            | 352,050      |
| 3/1/2020                      |                      |          |         |             |          |            |             |           |            |              | 21,525     | 21,525       |              |            |              |
| 9/1/2020                      |                      |          |         |             |          |            | 305,000     | 21,525    | 326,525    | 305,000      | 21,525     | 326,525      |              |            | 348,050      |
| 3/1/2021                      |                      |          |         |             |          |            |             |           |            |              | 16,950     | 16,950       |              |            |              |
| 9/1/2021                      |                      |          |         |             |          |            | 310,000     | 16,950    | 326,950    | 310,000      | 16,950     | 326,950      |              |            | 343,900      |
| 3/1/2022                      |                      |          |         |             |          |            |             |           |            |              | 12,300     | 12,300       |              |            |              |
| 9/1/2022                      |                      |          |         |             |          |            | 320,000     | 12,300    | 332,300    | 320,000      | 12,300     | 332,300      |              |            | 344,600      |
| 3/1/2023                      |                      |          |         |             |          |            |             |           |            |              | 7,500      | 7,500        |              |            |              |
| 9/1/2023                      |                      |          |         |             |          |            | 335,000     | 7,500     | 342,500    | 335,000      | 7,500      | 342,500      |              |            | 350,000      |
| 3/1/2024                      |                      |          |         |             |          |            |             |           |            |              | 2,475      | 2,475        |              |            |              |
| 9/1/2024                      |                      |          |         |             |          |            | 85,000      | 2,475     | 87,475     | 85,000       | 2,475      | 87,475       |              |            | 89,950       |
| 3/1/2025                      |                      |          |         |             |          |            |             |           |            |              | 1,200      | 1,200        |              |            |              |
| 9/1/2025                      |                      |          |         |             |          |            | 80,000      | 1,200     | 81,200     | 80,000       | 1,200      | 81,200       |              |            | 82,400       |
| TOTAL                         | 793,515              | 93,315   | 886,835 | \$ 165,000  | \$ 6,023 | \$ 171,023 | \$ 205,000  | \$ 16,600 | \$ 221,600 | \$ 3,030,000 | \$ 565,235 | \$ 3,595,235 | \$ 4,193,515 | \$ 681,173 | \$ 4,874,693 |

**Travis County ESD#3**  
**Profit & Loss Prev Year Comparison**

December 2024

|                                 | <b>Dec 24</b>       | <b>Dec 23</b>       | <b>\$ Change</b>  |
|---------------------------------|---------------------|---------------------|-------------------|
| <b>Revenue and Expense</b>      |                     |                     |                   |
| <b>Revenue</b>                  |                     |                     |                   |
| 407 INTEREST                    | 47,448.79           | 49,020.69           | -1,571.90         |
| 410 PROPERTY TAX                | 1,033,779.52        | 683,665.48          | 350,114.04        |
| 415 SALES TAX ALLOCATION        | 573,310.82          | 549,815.76          | 23,495.06         |
| 435 FACILITY RENTAL             | 7,704.00            | 350.00              | 7,354.00          |
| 470 FIRE ACADEMY FEES           | 43,456.15           | 8,600.00            | 34,856.15         |
| 471 EMT SCHOOL FEES             | 4,950.00            | 0.00                | 4,950.00          |
| 480 DONATIONS                   | 3,000.00            | 0.00                | 3,000.00          |
| 485 MISCELLANEOUS               | 0.00                | 79.90               | -79.90            |
| 490 WORKERS' COMP RECEIPTS      | 0.00                | 9,392.00            | -9,392.00         |
| 493 REIMBURSEMENTS              | 0.00                | 1,868.90            | -1,868.90         |
| <b>Total Revenue</b>            | <b>1,713,649.28</b> | <b>1,302,792.73</b> | <b>410,856.55</b> |
| <b>Expense</b>                  |                     |                     |                   |
| 500 COST OF REVENUE ACQUISITION | 29,782.50           | 27,497.16           | 2,285.34          |
| 600 EMERGENCY RESPONSE          | 33,496.77           | 70,881.19           | -37,384.42        |
| 630 CONTINUED EDUCATION         | 23,924.39           | 5,829.04            | 18,095.35         |
| 640 HUMAN RESOURCES             | 508,071.59          | 406,503.97          | 101,567.62        |
| 650 ADMINISTRATION              | 32,679.57           | 27,557.44           | 5,122.13          |
| 670 PREVENTION/PUBLIC EDUCATION | 35.80               | 0.00                | 35.80             |
| 685 MACKEY FIELD                | 0.00                | 16,593.44           | -16,593.44        |
| <b>Total Expense</b>            | <b>627,990.62</b>   | <b>554,862.24</b>   | <b>73,128.38</b>  |
| <b>Net Revenue</b>              | <b>1,085,658.66</b> | <b>747,930.49</b>   | <b>337,728.17</b> |

**Travis County ESD#3**  
**Revenue & Expense Prev Year Comparison**  
 October through December 2024

|                                 | <b>Oct - Dec 24</b> | <b>Oct - Dec 23</b> | <b>\$ Change</b>    |
|---------------------------------|---------------------|---------------------|---------------------|
| <b>Revenue and Expense</b>      |                     |                     |                     |
| <b>Revenue</b>                  |                     |                     |                     |
| 407 INTEREST                    | 161,967.80          | 146,538.28          | 15,429.52           |
| 410 PROPERTY TAX                | 1,067,478.60        | 713,389.38          | 354,089.22          |
| 415 SALES TAX ALLOCATION        | 1,569,432.38        | 1,594,906.58        | -25,474.20          |
| 435 FACILITY RENTAL             | 16,254.00           | 2,890.00            | 13,364.00           |
| 470 FIRE ACADEMY FEES           | 73,543.05           | 16,950.95           | 56,592.10           |
| 471 EMT SCHOOL FEES             | 11,550.00           | 11,091.20           | 458.80              |
| 480 DONATIONS                   | 3,000.00            | 0.00                | 3,000.00            |
| 485 MISCELLANEOUS               | 0.00                | 79.90               | -79.90              |
| 490 WORKERS' COMP RECEIPTS      | 0.00                | 9,392.00            | -9,392.00           |
| 493 REIMBURSEMENTS              | 546,690.46          | 56,997.26           | 489,693.20          |
| <b>Total Revenue</b>            | <b>3,449,916.29</b> | <b>2,552,235.55</b> | <b>897,680.74</b>   |
| <b>Expense</b>                  |                     |                     |                     |
| 500 COST OF REVENUE ACQUISITION | 51,704.93           | 52,775.81           | -1,070.88           |
| 600 EMERGENCY RESPONSE          | 101,678.87          | 211,333.77          | -109,654.90         |
| 630 CONTINUED EDUCATION         | 43,120.26           | 26,580.75           | 16,539.51           |
| 640 HUMAN RESOURCES             | 1,770,533.56        | 1,762,170.55        | 8,363.01            |
| 650 ADMINISTRATION              | 105,308.74          | 188,549.12          | -83,240.38          |
| 670 PREVENTION/PUBLIC EDUCATION | 7,999.82            | 4,221.36            | 3,778.46            |
| 685 MACKEY FIELD                | 1,031.00            | 16,593.44           | -15,562.44          |
| <b>Total Expense</b>            | <b>2,081,377.18</b> | <b>2,262,224.80</b> | <b>-180,847.62</b>  |
| <b>Net Revenue</b>              | <b>1,368,539.11</b> | <b>290,010.75</b>   | <b>1,078,528.36</b> |

Travis County ESD#3  
**Rev-Exp Budget for the YEAR vs. Actual**  
 October through December 2024

|                                 | <b>Oct - Dec 24</b> | <b>Budget</b>    | <b>\$ Over Budget</b> |
|---------------------------------|---------------------|------------------|-----------------------|
| <b>Revenue and Expense</b>      |                     |                  |                       |
| <b>Revenue</b>                  |                     |                  |                       |
| 407 INTEREST                    | 161,968             | 112,500          | 49,468                |
| 410 PROPERTY TAX                | 1,067,479           | 780,069          | 287,410               |
| 415 SALES TAX ALLOCATION        | 1,569,432           | 1,335,495        | 233,937               |
| 435 FACILITY RENTAL             | 16,254              | 800              | 15,454                |
| 470 FIRE ACADEMY FEES           | 73,543              | 16,300           | 57,243                |
| 471 EMT SCHOOL FEES             | 11,550              | 5,450            | 6,100                 |
| 480 DONATIONS                   | 3,000               | 0                | 3,000                 |
| 493 REIMBURSEMENTS              | 546,690             | 82,400           | 464,290               |
| <b>Total Revenue</b>            | <b>3,449,916</b>    | <b>2,333,014</b> | <b>1,116,902</b>      |
| <b>Expense</b>                  |                     |                  |                       |
| 500 COST OF REVENUE ACQUISITION | 51,705              | 36,048           | 15,657                |
| 600 EMERGENCY RESPONSE          | 101,679             | 151,485          | -49,806               |
| 630 CONTINUED EDUCATION         | 43,120              | 77,574           | -34,454               |
| 640 HUMAN RESOURCES             | 1,770,534           | 1,653,729        | 116,805               |
| 650 ADMINISTRATION              | 105,309             | 157,659          | -52,350               |
| 670 PREVENTION/PUBLIC EDUCATION | 8,000               | 17,625           | -9,625                |
| 685 MACKEY FIELD                | 1,031               | 0                | 1,031                 |
| <b>Total Expense</b>            | <b>2,081,378</b>    | <b>2,094,120</b> | <b>-12,742</b>        |
| <b>Net Revenue</b>              | <b>1,368,538</b>    | <b>238,894</b>   | <b>1,129,644</b>      |

**Travis County ESD#3**  
**Profit & Loss**  
 October through December 2024

**Oct - Dec 24**

**Revenue and Expense**

**Revenue**

|                                  |                            |
|----------------------------------|----------------------------|
| <b>407 INTEREST</b>              | 161,967.80                 |
| <b>410 PROPERTY TAX</b>          |                            |
| 4101 Prop Tax Current            | 1,046,758.22               |
| 4102 Prop Tax Prior              | 20,720.38                  |
| <b>Total 410 PROPERTY TAX</b>    | <u>1,067,478.60</u>        |
| <b>415 SALES TAX ALLOCATION</b>  | 1,569,432.38               |
| <b>435 FACILITY RENTAL</b>       |                            |
| 4351 BC Room Rental              | 1,950.00                   |
| 4352 Mackey Field rental         | 14,304.00                  |
| <b>Total 435 FACILITY RENTAL</b> | <u>16,254.00</u>           |
| <b>470 FIRE ACADEMY FEES</b>     | 73,543.05                  |
| <b>471 EMT SCHOOL FEES</b>       |                            |
| 4738 - EMT Academy 27            | 11,550.00                  |
| <b>Total 471 EMT SCHOOL FEES</b> | <u>11,550.00</u>           |
| <b>480 DONATIONS</b>             |                            |
| General Donations                | 3,000.00                   |
| <b>Total 480 DONATIONS</b>       | <u>3,000.00</u>            |
| <b>493 REIMBURSEMENTS</b>        |                            |
| 4934 TIFMAS                      | 546,690.46                 |
| <b>Total 493 REIMBURSEMENTS</b>  | <u>546,690.46</u>          |
| <b>Total Revenue</b>             | <u><u>3,449,916.29</u></u> |

**Expense**

|  |                   |
|--|-------------------|
| <b>500 COST OF REVENUE ACQUISITION</b>       |                   |
| 501 Prop Tax Coll & Val fees                 | 17,316.28         |
| 502 Sales Tax Collection Costs               | 34,388.65         |
| <b>Total 500 COST OF REVENUE ACQUISITION</b> | <u>51,704.93</u>  |
| <b>600 EMERGENCY RESPONSE</b>                |                   |
| 601 Apparatus                                | 14,135.00         |
| 602 Pagers                                   | 12.00             |
| 603 Dispatch & Communications                | 24,673.56         |
| 604 Fuel                                     | 4,518.76          |
| 605 SCBA Maintenance                         | 2,325.83          |
| 606 Vehicle Maint & Repairs                  | 13,697.44         |
| 608 Vehicle Supplies                         | 19,876.00         |
| 609 Uniforms & Protective Gear               | 857.34            |
| 611 Supplies - EMS                           | 1,676.94          |
| 613 Auto Insurance                           | 19,906.00         |
| <b>Total 600 EMERGENCY RESPONSE</b>          | <u>101,678.87</u> |
| <b>630 CONTINUED EDUCATION</b>               |                   |

**Travis County ESD#3**  
**Profit & Loss**  
 October through December 2024

|  | <u><b>Oct - Dec 24</b></u>     |
|--|--------------------------------|
| 631 Training - EMS                           | 311.13                         |
| 632 Training - Fire & Rescue                 | 14,592.17                      |
| 633 Seminars & Conferences                   | 12,301.39                      |
| 634 Fire Academy                             | 13,177.95                      |
| 635 EMT Certification School                 |                                |
| 635 / 11 EMT-B Cert                          | 535.50                         |
| 635 EMT Certification School - Other         | 2,202.12                       |
| <b>Total 635 EMT Certification School</b>    | <u>2,737.62</u>                |
| <b>Total 630 CONTINUED EDUCATION</b>         | <u>43,120.26</u>               |
| <b>640 HUMAN RESOURCES</b>                   |                                |
| 641 Benefits & Payroll Tax                   | 474,678.53                     |
| 642 Payroll                                  | 1,293,112.52                   |
| 644 Certifications                           | 2,742.51                       |
| <b>Total 640 HUMAN RESOURCES</b>             | <u>1,770,533.56</u>            |
| <b>650 ADMINISTRATION</b>                    |                                |
| 651 Building Maint.                          | 28,614.34                      |
| 652 Office Supplies                          | 1,125.30                       |
| 653 Station Supplies                         | 11,397.65                      |
| 654 Bank Fees                                |                                |
| 6541 SCHWAB Tex Reg Bank Fees                | 3,813.06                       |
| 654 Bank Fees - Other                        | -0.25                          |
| <b>Total 654 Bank Fees</b>                   | <u>3,812.81</u>                |
| 655 Dues & Subscriptions                     | 2,143.53                       |
| 656 Information Technology                   | 3,226.67                       |
| 657 Postage & Handling                       | 438.00                         |
| 658 Property & Liability Insura              | 19,986.00                      |
| 659 Professional Services                    | 375.00                         |
| 660 Public Notices/Articles                  | 528.00                         |
| 661 Telephone                                | 1,685.11                       |
| 662 Utilities                                | 19,326.53                      |
| 666 Contract Services                        | 12,649.80                      |
| <b>Total 650 ADMINISTRATION</b>              | <u>105,308.74</u>              |
| <b>670 PREVENTION/PUBLIC EDUCATION</b>       |                                |
| 672 Public Education                         | 7,999.82                       |
| <b>Total 670 PREVENTION/PUBLIC EDUCATION</b> | <u>7,999.82</u>                |
| <b>685 MACKEY FIELD</b>                      |                                |
| 6850 Mackey Tower & Parking                  | 1,031.00                       |
| <b>Total 685 MACKEY FIELD</b>                | <u>1,031.00</u>                |
| <b>Total Expense</b>                         | <u><u>2,081,377.18</u></u>     |
| <br><b>Net Revenue</b>                       | <br><u><u>1,368,539.11</u></u> |

**TRAVIS COUNTY ESD #3  
PROPERTY TAX REVENUE COLLECTION COMPARISON**

|             | FISCAL YEAR ENDING          |                       |                             |                       | Compared to prior year |       |
|-------------|-----------------------------|-----------------------|-----------------------------|-----------------------|------------------------|-------|
|             | 2024                        |                       | 2025                        |                       | Month \$               |       |
|             | For all prior to 2022 taxes | For Current 2023-2024 | For all prior to 2022 taxes | For Current 2024-2025 |                        |       |
| OCT         | \$3,814                     | \$0                   | \$1,044                     | \$0                   | \$0                    | 0%    |
| NOV         | \$2,210                     | \$37,513              | \$19,235                    | \$37,586              | \$73                   | 0%    |
| DEC         | \$1,274                     | \$775,902             | \$1,297                     | \$1,140,307           | \$364,405              | 47%   |
| JAN         | \$4,507                     | \$1,170,557           |                             |                       | -\$1,170,557           | -100% |
| FEB         | -\$82                       | \$129,252             |                             |                       | -\$129,252             | -100% |
| MAR         | -\$206                      | \$26,071              |                             |                       | -\$26,071              | -100% |
| APR         | \$7,504                     | \$11,196              |                             |                       | -\$11,196              | -100% |
| MAY         | -\$40                       | \$8,157               |                             |                       | -\$8,157               | -100% |
| JUN         | \$91                        | \$2,526               |                             |                       | -\$2,526               | -100% |
| JUL         | \$148                       | \$7,321               |                             |                       | -\$7,321               | -100% |
| AUG         | \$659                       | \$5,089               |                             |                       | -\$5,089               | -100% |
| SEPT        | \$4,360                     | \$3,514               |                             |                       | -\$3,514               | -100% |
| <b>YEAR</b> | <b>\$24,239</b>             | <b>\$2,177,098</b>    | <b>\$21,576</b>             | <b>\$1,177,893</b>    | <b>-\$999,205</b>      |       |
|             | <b>\$</b>                   | <b>2,201,337</b>      |                             | <b>\$1,199,469</b>    |                        |       |
|             |                             |                       | <b>2024-25 Tax Levy</b>     | <b>\$3,164,940</b>    |                        |       |

**NET CERTIFIED TAXABLE PROPERTY VALUE UPDATES FROM TCAD**

| Rec'd | FISCAL YEAR ENDING |                 |                        |                 | Inc/(Dec) from   |              |
|-------|--------------------|-----------------|------------------------|-----------------|------------------|--------------|
|       | 2024               |                 | 2025                   |                 | Prior Year \$    | Prior Year % |
|       | 2022               | 2023            | 2024                   | 2025            |                  |              |
| OCT   | \$4,021,203,201    | \$4,949,880,774 | \$5,555,074,925        | \$5,971,584,957 | \$416,510,032    | 93%          |
| NOV   | \$4,019,412,721    | \$4,939,469,343 | \$5,555,074,925        | \$5,971,383,511 | \$416,308,586    | 93%          |
| DEC   | \$4,019,412,721    | \$4,939,469,343 | \$5,555,074,925        | \$5,971,383,511 | \$416,308,586    | 93%          |
| JAN   | \$4,019,412,721    | \$4,939,469,343 | \$5,555,074,925        |                 | -\$5,555,074,925 | #DIV/0!      |
| FEB   | \$4,016,568,527    | \$4,928,211,764 | \$5,534,254,487        |                 | -\$5,534,254,487 | #DIV/0!      |
| MAR   | \$4,016,568,527    | \$4,928,211,764 | \$5,824,520,221        |                 | -\$5,824,520,221 | #DIV/0!      |
| APR   | \$4,924,900,120    | \$5,429,806,320 | \$5,824,520,221        |                 | -\$5,824,520,221 | #DIV/0!      |
| MAY   | \$4,924,900,120    | \$5,429,806,320 | \$5,824,520,221        |                 | -\$5,824,520,221 | #DIV/0!      |
| JUN   | \$4,015,709,788    | \$4,907,280,589 | \$5,530,028,973        |                 | -\$5,530,028,973 | #DIV/0!      |
| JUL   | \$4,906,006,624    | \$5,410,454,171 | \$5,530,028,973        |                 | -\$5,530,028,973 | #DIV/0!      |
| AUG   | \$4,905,339,474    | \$5,570,655,673 | \$5,978,769,295        |                 | -\$5,978,769,295 | #DIV/0!      |
| SEPT  | \$4,905,339,474    | \$5,570,655,673 | <b>\$5,971,584,957</b> |                 | -\$5,971,584,957 | #DIV/0!      |

2018-2019 Tax Levy on 6,028 Parcels is \$3,281,236,467 at a tax rate of .0975  
 2019-2020 Tax Levy on 6,025 Parcels is \$3,504,957,784 at a tax rate of .0800  
 2020-2021 Tax Levy on 6,069 Parcels is \$3,677,674,279 at a tax rate of .0790  
 2021-2022 Tax Levy on 6,056 Parcels is \$4,022,828,637 at a tax rate of .0650  
 2022-2023 Tax Levy on 6,056 Parcels on \$4,974,785,781 would compute to a NO NEW tax rate of .0538  
 ADOPTED RATE FOR 2022-2023 is .0450 or \$2,227,447 in taxes  
 2023-2024 NO NEW tax rate is .0411  
**2023-2024 Tax Levy on 5,583 parcels \$5,529,779,656 at .0400 would levy \$2,211,911 in taxes**

**2024-2025 Tax Levy on \$5,971,584,957 at .0530 would levy \$3,164,940 in taxes**

**Checks over \$2,000 for the period of December 12, 2024 to January 23, 2025**

| <u>Date</u> | <u>Num</u> | <u>Name</u>                         | <u>Memo</u>                                    | <u>Amount</u> |
|-------------|------------|-------------------------------------|--|---------------|
| 12/16/2024  | 19079      | TAC                                 | Health Insurance                               | \$96,692.20   |
| 12/16/2024  | 19080      | Tires Direct, LLC                   | Tires - Engine 301                             | \$5,499.00    |
| 12/16/2024  | Draft      | Wells Fargo Credit Card             | Multiple Charges                               | \$8,894.01    |
| 12/26/2024  | Draft      | Paychex                             | Employee 457 & Roth Contribution               | \$13,812.93   |
| 12/26/2024  | Draft      | Paychex                             | Employer 401 Matching                          | \$29,000.48   |
| 12/26/2024  | Draft      | Paychex                             | Net Payroll                                    | \$112,469.12  |
| 12/26/2024  | Draft      | Paychex                             | Employment Taxes                               | \$41,015.24   |
| 12/26/2024  | Draft      | Costco Visa Card                    | Multiple Charges                               | \$15,380.66   |
| 1/7/2025    | Draft      | Paychex                             | Employee 457 & Roth Contribution               | \$17,535.58   |
| 1/7/2025    | Draft      | Paychex                             | Employer 401 Matching                          | \$28,512.93   |
| 1/7/2025    | Draft      | Paychex                             | Net Payroll                                    | \$106,492.20  |
| 1/7/2025    | Draft      | Paychex                             | Employment Taxes                               | \$41,274.47   |
| 1/22/2025   | Draft      | Wells Fargo Money Market            | Transfer to Checking                           | \$500,000.00  |
| 1/22/2025   | Draft      | Paychex                             | Employee 457 & Roth Contribution               | \$20,960.17   |
| 1/22/2025   | Draft      | Paychex                             | Employer 401 Matching                          | \$32,658.72   |
| 1/22/2025   | Draft      | Paychex                             | Net Payroll                                    | \$120,909.87  |
| 1/22/2025   | Draft      | Paychex                             | Employment Taxes                               | \$50,235.82   |
| 1/23/2025   | 19087      | ABC Home and Commercial             | HVAC Repairs - Station 302                     | \$2,133.29    |
| 1/23/2025   | 19095      | Bill Bailey's Signs                 | ATV Trailer Logos                              | \$2,500.00    |
| 1/23/2025   | 19099      | City of Austin Utilities            | Electric and Water Usage                       | \$3,155.81    |
| 1/23/2025   | 19101      | Delta Industrial Service and Supply | Wildfire Shelters                              | \$3,965.00    |
| 1/23/2025   | 19104      | Fast & Friendly Promotions          | Fire Academy Uniforms                          | \$2,189.50    |
| 1/23/2025   | 19107      | HHH Services                        | UTV Skid Install & Training Tower Stair Repair | \$5,450.00    |
| 1/23/2025   | 19112      | Motorola Solutions, Inc.            | Nine Portable Radios                           | \$92,396.79   |
| 1/23/2025   | 19113      | Mtech                               | Replace Water Heater - Station 302             | \$24,763.85   |
| 1/23/2025   | 19114      | Municipal Emergency Services        | SCBA Testing                                   | \$2,901.47    |
| 1/23/2025   | 19120      | TAC                                 | Health Insurance                               | \$48,346.10   |
| 1/23/2025   | 19123      | The Hartford                        | Accident Insurance                             | \$4,623.86    |
| 1/23/2025   | 19124      | Travis County ESD #6                | Elevator Class - Barfield, Lyngaas, Payne      | \$2,125.00    |
| 1/23/2025   | 19126      | Waste Management                    | Trash Service                                  | \$2,113.56    |



Schedule of Temporary Investments  
 Period of September 1 to December 31, 2024

At Maturity

| General Funds                         | Interest Rate | Trade Date | Maturity Date | Interest 9/1 to 12/31 | Beginning Cost Value | Unrealized Gain/Loss | Accrued Interest | Current Market Value |
|---------------------------------------|---------------|------------|---------------|-----------------------|----------------------|----------------------|------------------|----------------------|
| Wells Fargo Advisors - Sweep Acct. ** | 4.20%         | n/a        | n/a           | <b>\$29,363.27</b>    | \$1,161,732.72       | \$0.00               | \$0.00           | \$6,086.99           |
| Wells Fargo - Money Market            | 0.73%         | n/a        | n/a           | \$2,527.25            | \$1,178,595.85       | \$0.00               | \$0.00           | \$2,003,804.22       |
| <b>Charles Schwab Sweep Account**</b> | 1.05%         | n/a        | n/a           | \$42,835.14           | \$6,879.50           | \$0.00               | \$0.00           | \$44,642.83          |
| Charles Schwab Bank CD                | 5.35%         | 6/5/2024   | 6/5/2025      | <b>\$13,107.50</b>    | \$245,000.00         | \$1,055.95           | \$7,541.30       | \$246,055.95         |
| Beal Bank CD                          | 5.00%         | 3/20/2024  | 3/19/2025     | <b>\$12,250.00</b>    | \$245,000.00         | \$276.85             | \$9,632.19       | \$245,276.85         |
| Cross River Bank CD                   | 5.35%         | 6/11/2024  | 4/11/2025     | <b>\$13,107.50</b>    | \$245,000.00         | \$634.55             | \$7,325.84       | \$245,634.55         |
| Goldmans Sachs Bank CD                | 5.30%         | 6/11/2024  | 6/11/2025     | <b>\$12,985.00</b>    | \$245,000.00         | \$1,058.40           | \$7,257.38       | \$246,058.40         |
| Valley National CD                    | 5.00%         | 3/11/2024  | 9/11/2025     | <b>\$12,250.00</b>    | \$245,000.00         | \$1,381.80           | \$3,758.90       | \$246,381.80         |
| US Bank CD                            | 4.10%         | 11/6/2024  | 11/6/2025     | <b>\$9,635.00</b>     | \$235,000.00         | -\$101.05            | \$1,475.25       | \$234,898.95         |
| Finwise Bank                          | 4.20%         | 11/27/2024 | 11/26/2025    | <b>\$9,870.00</b>     | \$235,000.00         | \$126.90             | \$946.44         | \$235,126.90         |
| Tex Pool Investment Account           | 4.65%         | n/a        | n/a           | \$106,031.31          | \$6,514,260.96       | \$0.00               | \$0.00           | \$6,620,292.27       |
| <b>Reserve Funds</b>                  |               |            |               |                       |                      |                      |                  |                      |
| SPDR Bloomberg Treasury Bills         | closed        | n/a        | n/a           | \$0.00                | \$0.00               | \$0.00               | \$0.00           | \$0.00               |
| Charles Schwab Treasury Notes         | 4.89%         | 7/18/2024  | 1-24 months   | \$49,275.44           | \$6,008,982.70       | \$39,731.81          | \$0.00           | \$6,058,258.14       |
| Wells Fargo - Reserve Bond Debt       | 0.74%         | n/a        | n/a           | \$322.22              | \$112,954.45         | \$0.00               | \$0.00           | \$113,276.67         |
| Wells Fargo - Reserve Savings         | 0.74%         | n/a        | n/a           | \$2,311.26            | \$810,210.58         | \$0.00               | \$0.00           | \$812,521.84         |
| Mizuho Bank CD                        | 4.25%         | 10/9/2024  | 4/9/2025      | <b>\$10,412.50</b>    | \$245,000.00         | -\$53.90             | \$2,396.30       | \$244,946.10         |
| Northern Bank CD                      | 4.05%         | 10/9/2024  | 6/9/2025      | <b>\$9,922.50</b>     | \$245,000.00         | -\$203.35            | \$2,283.54       | \$244,796.65         |
| Bank of America                       | 4.10%         | 10/31/2024 | 10/31/2025    | <b>\$9,635.00</b>     | \$235,000.00         | -\$105.75            | \$1,636.63       | \$234,894.25         |
| BMO Bank                              | 4.10%         | 10/31/2024 | 10/31/2025    | <b>\$9,635.00</b>     | \$235,000.00         | -\$105.75            | \$1,636.63       | \$234,894.25         |
| Tex Pool Reserve Savings              | 4.65%         | n/a        | n/a           | \$10,831.73           | \$665,463.18         | \$0.00               | \$0.00           | \$676,294.91         |
| <b>TOTALS</b>                         |               |            |               |                       |                      |                      |                  | \$18,994,142.52      |

**Cash Sweep\*\* - Interest includes amounts from CD's and T. Bills**

This quarterly report is in full compliance with the investment strategy as established for the Public Funds Investments Act and the Districts Investment Policy as set forth by TCESD#3

**Edd New - President**

**Carroll Knight - Treasurer and Investment Officer**

**Oak Hill Fire Department**  
**Travis County Emergency Services District #3**

**Station 301**  
**Circle Drive**  
**9211 Circle Drive**  
**Austin, Texas 78736**  
**512-288-5576**  
**Fax 512-288-5903**



**Station 302**  
**Barton Creek**  
**4111 Barton Creek**  
**Austin, Texas 78735**  
**Admin 512-288-5534**  
**Fax 512-288-5844**

---

**January 2025 Sales Tax Summary**

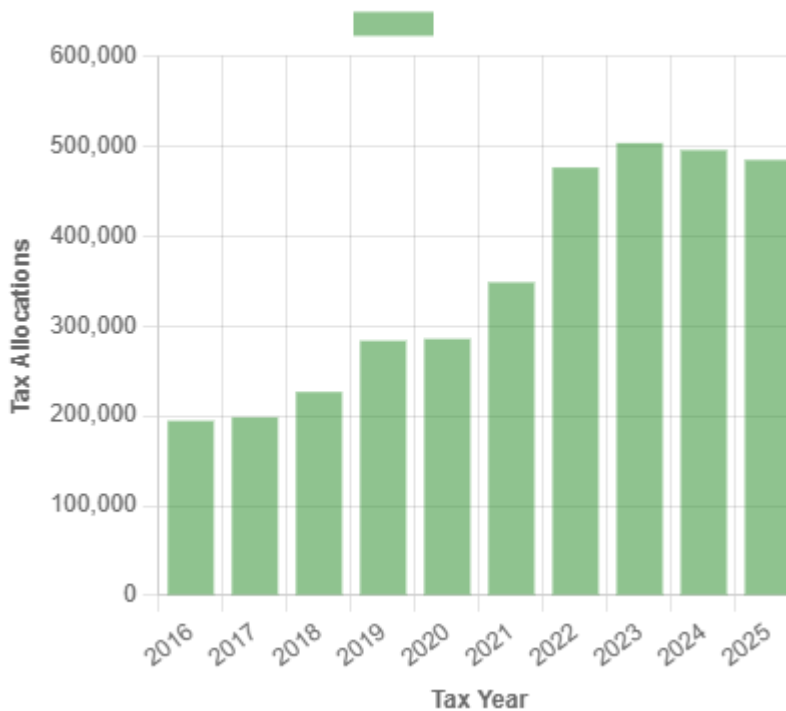
The January allocation reflects sales made during the month of November.

Our January 2025 sales tax allocation was \$484,410 which was down 2.2% (\$10,878) compared to January 2024 and down 1.7% (\$35,312) year to date compared to last fiscal year.

Our top 10 large companies accounted for 55.5%, our top 30 large companies accounted for 70.8%, and our top 100 large companies accounted for 84.3% of our total fiscal year to date collections.

A significant increase occurred this month compared to last year at the Omni Barton Creek Resort. We saw reductions in two construction-related and landscaping companies.

January - Sales Tax Allocations by Year



*Chart Source: Municipal Advisory Council of Texas (mactexas.com)*

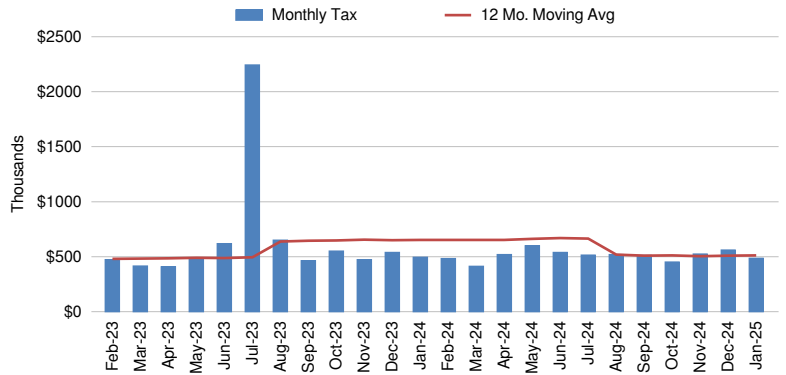
HdL Companies  
**SALES TAX SNAPSHOT**  
**Travis Co Esd 3**

Jan-25

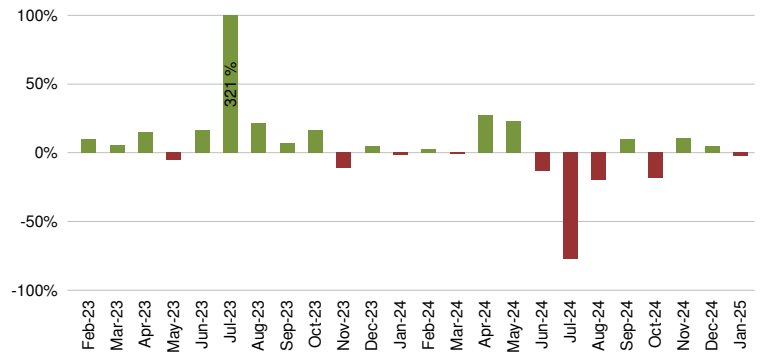
Sales Tax Net Payments

| FY Mo.   | FY2024       | FY2025       | YoY % Change |
|----------|--------------|--------------|--------------|
| Oct      | \$ 550,031   | \$ 451,558   | -17.9%       |
| Nov      | \$ 473,926   | \$ 524,331   | 10.6%        |
| Dec      | \$ 537,490   | \$ 561,125   | 4.4%         |
| Jan      | \$ 495,288   | \$ 484,410   | -2.2%        |
| Feb      | \$ 482,206   |              |              |
| Mar      | \$ 412,888   |              |              |
| Apr      | \$ 518,471   |              |              |
| May      | \$ 599,214   |              |              |
| Jun      | \$ 538,869   |              |              |
| Jul      | \$ 513,982   |              |              |
| Aug      | \$ 518,910   |              |              |
| Sep      | \$ 510,495   |              |              |
| FYTD     | \$ 2,056,735 | \$ 2,021,423 | -1.7%        |
| FY Total | \$ 6,151,771 |              |              |

Sales Tax Net Payments Trend



Sales Tax Net Payments Change - YoY



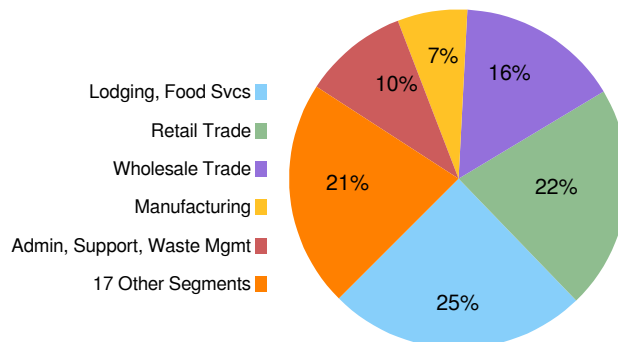
Top 10 Taxpayers

| Rank                        | Company                                | FYTD Collections | % Total |
|-----------------------------|--|------------------|---------|
| 1                           | OMNI BARTON CREEK, INC.                |                  |         |
| 2                           | VAUGHAN & SONS INC.                    |                  |         |
| 3                           | AMAZON.COM SERVICES INC (MARKETPLACE)  |                  |         |
| 4                           | MCCOY CORPORATION                      |                  |         |
| 5                           | AMAZON FULFILLMENT SERVICES INC        |                  |         |
| 6                           | AUSTIN READY-MIX, LLC                  |                  |         |
| 7                           | BAREFOOT MOSQUITO AND PEST CONTROL INC |                  |         |
| 8                           | TOP CHOICE LAWN CARE, LLC              |                  |         |
| 9                           | FP LEGACY LANDSCAPING LLC              |                  |         |
| 10                          | GROVE LANDSCAPES LLC                   |                  |         |
| Top 10 Companies            |  | \$ 1,144,256     | 55.5%   |
| 4973 Other Large Companies  |  | \$ 882,995       | 42.8%   |
| Small Companies/Other       |  | \$ 11,059        | 0.5%    |
| Single Local Tax Rate (SLT) |  | \$ 23,806        | 1.2%    |
| Total                       |  | \$ 2,062,116     | 100.0%  |

Industry Segment Collections Trend - YoY % Chg

| SEGMENT                    | Aug    | Sep   | Oct    | Nov    | Dec    | Jan    |
|----------------------------|--------|-------|--------|--------|--------|--------|
| Lodging, Food Svcs         | -9.9%  | 3.6%  | -16.5% | 15.2%  | 3.9%   | 68.0%  |
| Retail Trade               | -6.2%  | 20.1% | -33.4% | 43.2%  | 15.3%  | 2.8%   |
| Wholesale Trade            | -56.3% | 5.8%  | -38.5% | -33.6% | -46.8% | -46.1% |
| Admin, Support, Waste Mgmt | -15.0% | 6.1%  | -10.9% | 12.4%  | 12.0%  | 39.6%  |
| Manufacturing              | 6.2%   | 5.4%  | 2.1%   | 0.7%   | 7.3%   | 9.5%   |
| All Others                 | 9.2%   | 16.1% | 9.7%   | 14.8%  | 41.7%  | -31.4% |
| Total Collections          | -16.2% | 10.6% | -18.5% | 10.6%  | 3.4%   | -2.1%  |

Sales Tax Collections by Industry Segment





**Travis Co Esd 3**  
**SALES TAX PAYMENT DETAIL**

**Jan-25**

Fiscal Year: Oct-Sep

| <b>COLLECTIONS</b>    | <b>Jan-24</b>  | <b>Jan-25</b>  | <b>Chg. \$<br/>Chg. %</b> | <b>Prior<br/>FYTD</b> | <b>Current<br/>FYTD</b> | <b>Chg. \$<br/>Chg. %</b> |
|-----------------------|----------------|----------------|---------------------------|-----------------------|-------------------------|---------------------------|
| <b>Current Period</b> | <b>448,014</b> | <b>481,985</b> | <b>33,970<br/>7.6%</b>    | <b>1,990,324</b>      | <b>1,999,148</b>        | <b>8,824<br/>0.4%</b>     |
| Prior Period          | 61,103         | 3,069          | (58,034)<br>-95.0%        | 70,917                | 23,987                  | (46,930)<br>-66.2%        |
| Future Period         | 4,726          | 1,182          | (3,544)<br>-75.0%         | 31,308                | 9,610                   | (21,698)<br>-69.3%        |
| Audit                 | (16,179)       | 123            | 16,302<br>-100.8%         | (13,633)              | 4,884                   | 18,517<br>-135.8%         |
| Unidentified          | 90             | 72             | (17)<br>-19.2%            | 861                   | 681                     | (180)<br>-20.9%           |
| Single Local Tax Rate | 6,736          | 6,252          | (484)<br>-7.2%            | 19,619                | 23,806                  | 4,187<br>21.3%            |
| <b>TOTAL</b>          | <b>504,489</b> | <b>492,684</b> | <b>(11,806)<br/>-2.3%</b> | <b>2,099,396</b>      | <b>2,062,116</b>        | <b>(37,280)<br/>-1.8%</b> |
| Service Fee           | (10,090)       | (9,854)        | 236<br>-2.3%              | (41,988)              | (41,242)                | 746<br>-1.8%              |
| Current Retained      | (9,888)        | (9,657)        | 231<br>-2.3%              | (41,148)              | (40,417)                | 731<br>-1.8%              |
| Prior Retained        | 10,776         | 11,237         | 461<br>4.3%               | 40,475                | 40,967                  | 492<br>1.2%               |
| <b>NET PAYMENT</b>    | <b>495,288</b> | <b>484,410</b> | <b>(10,878)<br/>-2.2%</b> | <b>2,056,735</b>      | <b>2,021,423</b>        | <b>(35,312)<br/>-1.7%</b> |

**Travis Co Esd 3**  
**TOP 30 COMPANIES RANK and CHANGE SUMMARY**  
**Jan-25**

Fiscal Year: Oct-Sep

| Rank*  | Company                                       | NAICS<br>Key | Prior<br>Fiscal YTD<br>Sales Tax<br>Collections | Current<br>Fiscal YTD<br>Sales Tax<br>Collections | Change<br>\$     | Change<br>%  | Current<br>Fiscal YTD<br>% Total<br>Collections |
|--|---|--------------|---|---|------------------|--------------|---|
| 1  | OMNI BARTON CREEK, INC.                       | 22           |   |   |                  |              |   |
| 2  | VAUGHAN & SONS INC.                           | 8            |   |   |                  |              |   |
| 3  | AMAZON.COM SERVICES INC (MARKETPLACE)         | 9            |   |   |                  |              |   |
| 4  | MCCOY CORPORATION                             | 9            |   |   |                  |              |   |
| 5  | AMAZON FULFILLMENT SERVICES INC               | 8            |   |   |                  |              |   |
| 6  | AUSTIN READY-MIX, LLC                         | 5            |   |   |                  |              |   |
| 7  | BAREFOOT MOSQUITO AND PEST CONTROL INC        | 18           |   |   |                  |              |   |
| 8  | TOP CHOICE LAWN CARE, LLC                     | 18           |   |   |                  |              |   |
| 9  | FP LEGACY LANDSCAPING LLC                     | 25           |   |   |                  |              |   |
| 10   | GROVE LANDSCAPES LLC                          | 18           |   |   |                  |              |   |
| <b>TOP 10 LARGE** COMPANIES</b>                |   |              | <b>1,252,480</b>                                | <b>1,144,256</b>                                  | <b>(108,223)</b> | <b>-8.6%</b> | <b>55.5%</b>                                    |
| 11   | APPLE INC.                                    | 5            |   |   |                  |              |   |
| 12   | SITEPRO RENTALS INC.                          | 15           |   |   |                  |              |   |
| 13   | AUSTIN EAGLE MANAGEMENT SERVICES, LTD.        | 16           |   |   |                  |              |   |
| 14   | A. M. PETROLEUM, INC.                         | 9            |   |   |                  |              |   |
| 15   | J.J. ORION, LLC                               | 9            |   |   |                  |              |   |
| 16   | WASTEWATER OPERATIONS LLC                     | 4            |   |   |                  |              |   |
| 17   | YARDDOC LLC                                   | 18           |   |   |                  |              |   |
| 18   | J MAASS INC                                   | 4            |   |   |                  |              |   |
| 19   | CITY OF AUSTIN                                | 24           |   |   |                  |              |   |
| 20   | ASAP STONE AND LANDSCAPE SUPPLY LLC.          | 9            |   |   |                  |              |   |
| 21   | COPPER ROCK NURSERY, LLC                      | 9            |   |   |                  |              |   |
| 22   | NEW CINGULAR WIRELESS PCS, LLC                | 12           |   |   |                  |              |   |
| 23   | EBAY INC.                                     | 25           |   |   |                  |              |   |
| 24   | PEDERNALES ELECTRIC COOPERATIVE, INC.         | 3            |   |   |                  |              |   |
| 25   | TEXAS DISPOSAL SYSTEMS, INC.                  | 18           |   |   |                  |              |   |
| 26   | DISCOUNT TIRE COMPANY OF TEXAS INC.           | 9            |   |   |                  |              |   |
| 27   | MOM'S CONVENIENCE STORE INC.                  | 9            |   |   |                  |              |   |
| 28   | BLUE CHEM, INC.                               | 18           |   |   |                  |              |   |
| 29   | SUMMERMOON COFFEE, LLC                        | 22           |   |   |                  |              |   |
| 30   | PRASLA ENTERPRISE, A TEXAS FOR PROFIT CORPORA | 9            |   |   |                  |              |   |
| <b>TOP 30 LARGE COMPANIES</b>                  |   |              | <b>1,542,891</b>                                | <b>1,460,908</b>                                  | <b>(81,983)</b>  | <b>-5.3%</b> | <b>70.8%</b>                                    |
| <b>TOP 100 LARGE COMPANIES</b>                 |   |              | <b>1,818,167</b>                                | <b>1,738,275</b>                                  | <b>(79,892)</b>  | <b>-4.4%</b> | <b>84.3%</b>                                    |
| <b>4,882 OTHER LARGE COMPANIES</b>             |   |              | <b>253,861</b>                                  | <b>288,977</b>                                    | <b>35,116</b>    | <b>13.8%</b> | <b>14.0%</b>                                    |
| <b>SMALL COMPANIES &amp; OTHER</b>             |   |              | <b>7,749</b>                                    | <b>11,059</b>                                     | <b>3,309</b>     | <b>42.7%</b> | <b>0.5%</b>                                     |
| <b>SINGLE LOCAL TAX RATE COLLECTIONS (SLT)</b> |   |              | <b>19,619</b>                                   | <b>23,806</b>                                     | <b>4,187</b>     | <b>21.3%</b> | <b>1.2%</b>                                     |
| <b>TOTAL COLLECTIONS</b>                       |   |              | <b>2,099,396</b>                                | <b>2,062,116</b>                                  | <b>(37,280)</b>  | <b>-1.8%</b> | <b>100.0%</b>                                   |
| <b>STATE COMPROLLER FEES</b>                   |   |              | <b>42,661</b>                                   | <b>40,693</b>                                     | <b>(1,968)</b>   | <b>-4.6%</b> | <b>2.0%</b>                                     |
| <b>NET PAYMENTS</b>                            |   |              | <b>2,056,735</b>                                | <b>2,021,423</b>                                  | <b>(35,312)</b>  | <b>-1.7%</b> | <b>98.0%</b>                                    |

\* Ranked by Total of Last Fiscal Year + Current Fiscal YTD

\*\* Businesses whose detailed sales tax data is available

**Travis Co Esd 3**  
**INDUSTRY SEGMENT RANK & CHANGE**

Jan-25

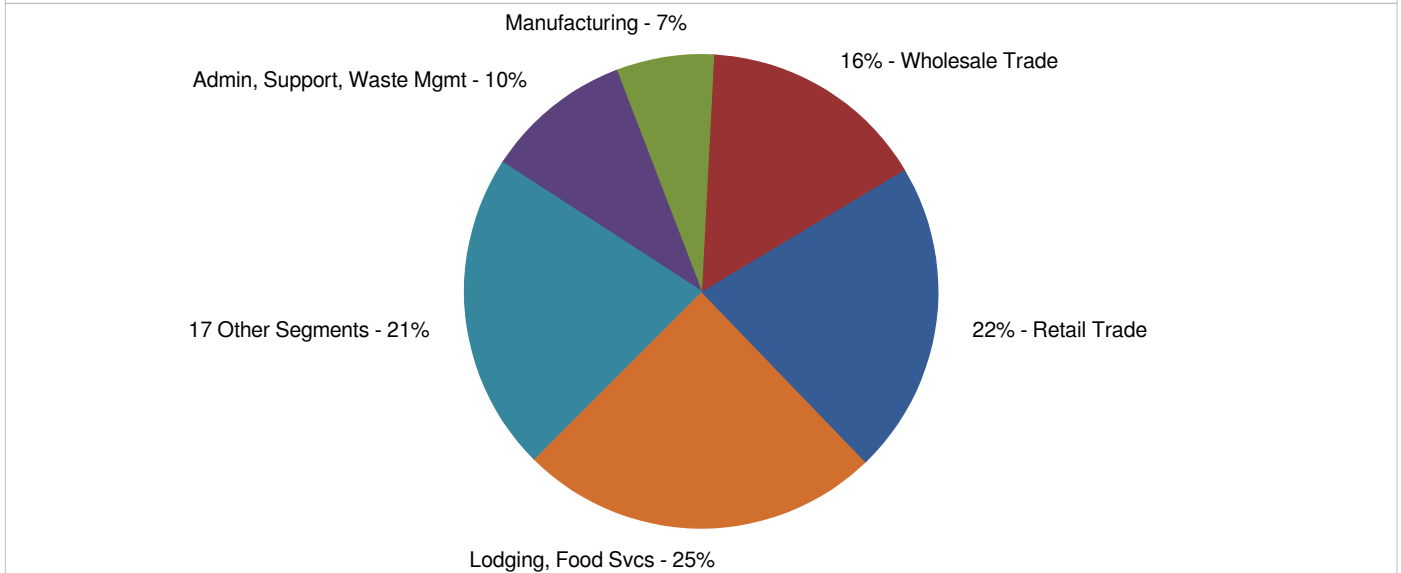
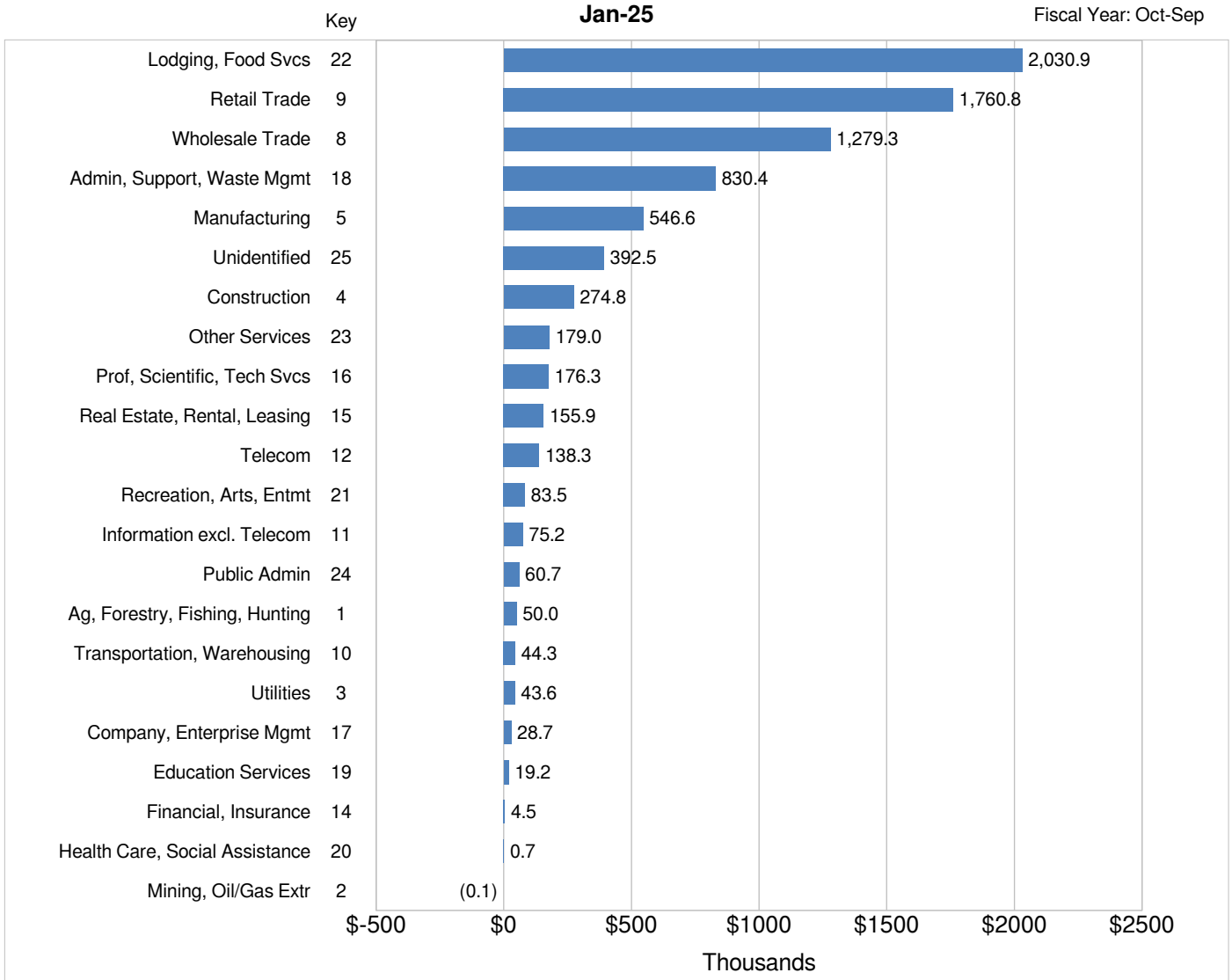
Fiscal Year: Oct-Sep

| INDUSTRY SEGMENT*              | % Total Current YTD Collections | Prior Fiscal YTD Sales Tax Collections | Current Fiscal YTD Sales Tax Collections | Change          |              |
|--------------------------------|---------------------------------|--|--|-----------------|--------------|
|                                |                                 |  |  | \$              | %            |
| Lodging, Food Svcs             | 28.2%                           | 506,876                                | 571,019                                  | 64,142          | 12.7%        |
| Retail Trade                   | 21.2%                           | 425,459                                | 430,720                                  | 5,261           | 1.2%         |
| Wholesale Trade                | 10.8%                           | 376,152                                | 219,627                                  | (156,525)       | -41.6%       |
| Admin, Support, Waste Mgmt     | 10.7%                           | 195,902                                | 216,214                                  | 20,312          | 10.4%        |
| Manufacturing                  | 6.8%                            | 132,383                                | 138,772                                  | 6,389           | 4.8%         |
| <b>Top 5</b>                   | <b>77.8%</b>                    | <b>1,636,773</b>                       | <b>1,576,352</b>                         | <b>(60,420)</b> | <b>-3.7%</b> |
| Unidentified                   | 5.1%                            | 98,011                                 | 103,447                                  | 5,436           | 5.5%         |
| Construction                   | 3.4%                            | 62,598                                 | 68,627                                   | 6,028           | 9.6%         |
| Other Services                 | 2.4%                            | 42,789                                 | 47,858                                   | 5,070           | 11.8%        |
| Prof, Scientific, Tech Svcs    | 1.9%                            | 65,197                                 | 39,016                                   | (26,181)        | -40.2%       |
| Real Estate, Rental, Leasing   | 2.2%                            | 27,559                                 | 44,074                                   | 16,515          | 59.9%        |
| Telecom                        | 1.8%                            | 33,286                                 | 36,941                                   | 3,655           | 11.0%        |
| Information excl. Telecom      | 1.6%                            | 26,934                                 | 32,217                                   | 5,282           | 19.6%        |
| Recreation, Arts, Entmt        | 1.0%                            | 19,579                                 | 19,985                                   | 407             | 2.1%         |
| Public Admin                   | 0.8%                            | 14,790                                 | 15,905                                   | 1,115           | 7.5%         |
| Ag, Forestry, Fishing, Hunting | 0.5%                            | 11,136                                 | 9,555                                    | (1,581)         | -14.2%       |
| Transportation, Warehousing    | 0.5%                            | 9,749                                  | 10,046                                   | 297             | 3.0%         |
| Utilities                      | 0.4%                            | 10,213                                 | 8,362                                    | (1,851)         | -18.1%       |
| Company, Enterprise Mgmt       | 0.5%                            | 5,790                                  | 9,258                                    | 3,468           | 59.9%        |
| Education Services             | 0.2%                            | 5,569                                  | 4,289                                    | (1,280)         | -23.0%       |
| Financial, Insurance           | 0.1%                            | 1,917                                  | 1,025                                    | (892)           | -46.5%       |
| Health Care, Social Assistance | 0.0%                            | 109                                    | 254                                      | 145             | 132.6%       |
| Mining, Oil/Gas Extr           | 0.0%                            | 28                                     | 40                                       | 11              | 40.5%        |
| <b>All Other</b>               | <b>22.2%</b>                    | <b>435,255</b>                         | <b>450,899</b>                           | <b>15,644</b>   | <b>3.6%</b>  |
| <b>TOTAL COLLECTIONS</b>       | <b>100.0%</b>                   | <b>2,072,028</b>                       | <b>2,027,251</b>                         | <b>(44,776)</b> | <b>-2.2%</b> |

| INDUSTRY SEGMENT           | % Change from same month Prior Year |              |               |              |             |              |
|----------------------------|-------------------------------------|--------------|---------------|--------------|-------------|--------------|
|                            | Aug                                 | Sep          | Oct           | Nov          | Dec         | Jan          |
| Lodging, Food Svcs         | -9.9%                               | 3.6%         | -16.5%        | 15.2%        | 3.9%        | 68.0%        |
| Retail Trade               | -6.2%                               | 20.1%        | -33.4%        | 43.2%        | 15.3%       | 2.8%         |
| Wholesale Trade            | -56.3%                              | 5.8%         | -38.5%        | -33.6%       | -46.8%      | -46.1%       |
| Admin, Support, Waste Mgmt | -15.0%                              | 6.1%         | -10.9%        | 12.4%        | 12.0%       | 39.6%        |
| Manufacturing              | 6.2%                                | 5.4%         | 2.1%          | 0.7%         | 7.3%        | 9.5%         |
| All Others                 | 9.2%                                | 16.1%        | 9.7%          | 14.8%        | 41.7%       | -31.4%       |
| <b>TOTAL COLLECTIONS</b>   | <b>-16.2%</b>                       | <b>10.6%</b> | <b>-18.5%</b> | <b>10.6%</b> | <b>3.4%</b> | <b>-2.1%</b> |

\* Ranked by Current + Prior YTD Collections

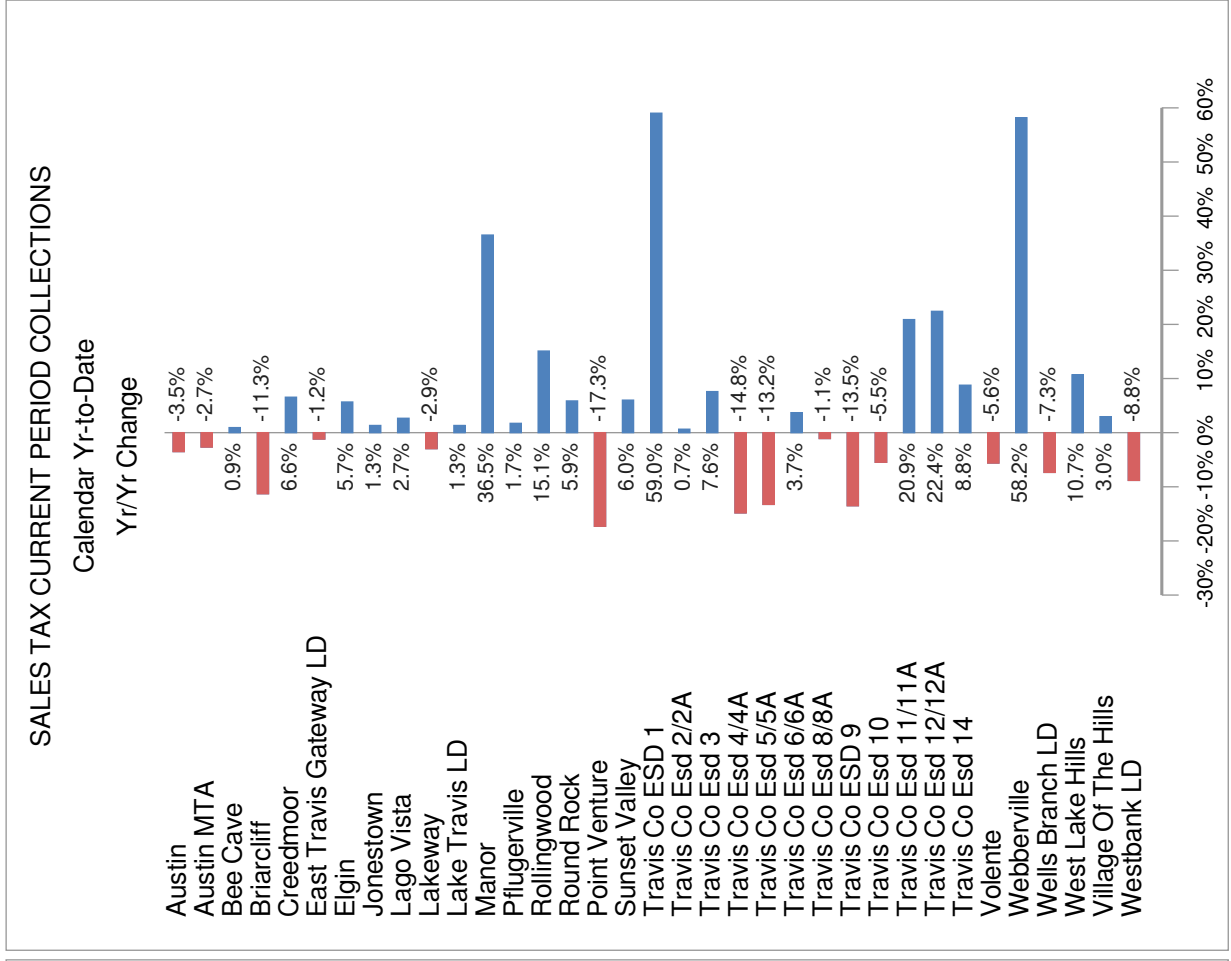
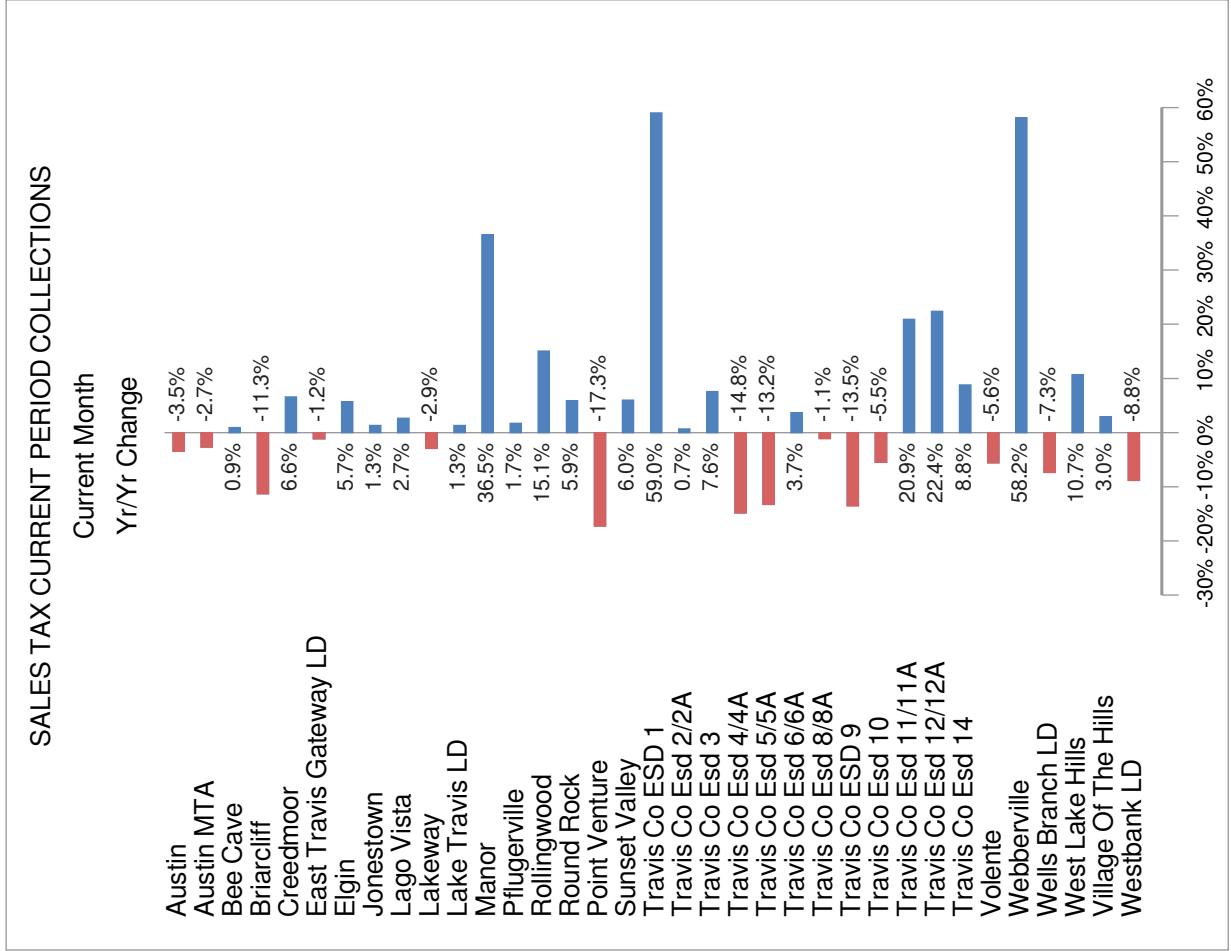
**INDUSTRY SEGMENT SALES TAX RANK & DISTRIBUTION**  
(Prior Fiscal Year + Current Fiscal Year-to-Date)





# SALES TAX TREND TRAVIS COUNTY

Jan-25



**NAICS KEY**

| <b>Code</b> | <b>Industry Segment</b>        |
|-------------|--------------------------------|
| 1           | Ag, Forestry, Fishing, Hunting |
| 2           | Mining, Oil/Gas Extr           |
| 3           | Utilities                      |
| 4           | Construction                   |
| 5           | Manufacturing                  |
| 6           | Included in Key No. 5          |
| 7           | Included in Key No. 5          |
| 8           | Wholesale Trade                |
| 9           | Retail Trade                   |
| 10          | Transportation, Warehousing    |
| 11          | Information excl. Telecom      |
| 12          | Telecom                        |
| 13          | Included in Key No. 11         |
| 14          | Financial, Insurance           |
| 15          | Real Estate, Rental, Leasing   |
| 16          | Prof, Scientific, Tech Svcs    |
| 17          | Company, Enterprise Mgmt       |
| 18          | Admin, Support, Waste Mgmt     |
| 19          | Education Services             |
| 20          | Health Care, Social Assistance |
| 21          | Recreation, Arts, Entmt        |
| 22          | Lodging, Food Svcs             |
| 23          | Other Services                 |
| 24          | Public Admin                   |
| 25          | Unidentified                   |

**Oak Hill Fire Department**  
**Travis County Emergency Services District #3**

**Station 301**  
**Circle Drive**  
**9211 Circle Drive**  
**Austin, Texas 78736**  
**512-288-5576**  
**Fax 512-288-5903**



**Station 302**  
**Barton Creek**  
**4111 Barton Creek**  
**Austin, Texas 78735**  
**Admin 512-288-5534**  
**Fax 512-288-5844**

---

**January 2025 Operations Report**

**Significant Events**

**December 3 (C) – Structure Fire – AutoAid Received (Austin) – 8814 Thunderbird Rd**

[Engine 301] E301 responded to a light box alarm on Thunderbird Road which was changed to a full box alarm enroute. On arrival, the home in question was within a large, locked sliding gate. The homeowner was on the other side and was unable to unlock the gate because the key was inside the burning home. E301 crew used bolt cutters to gain entry into the property and E301 was able to drive onto the property. E301 assumed command with a one story home, fire showing from the exterior, offensive mode, and pulling a rack line. Heavy fire was blowing out of a door on the Delta side with black smoke coming out of a door on the Alpha side. Unable to do a complete 360 because the Bravo side was against a fence, but it appeared the fire was heaviest at the Delta side. The homeowner verified that no one was in the home. The door on the Alpha side was closed and the hose line was used to blitz the Delta side. The bulk of the fire was knocked down and E301 crew made entry. While entering, there was electrical arcing in the Delta/Charlie corner.

By this time, E37 assumed back up, Q51 assumed Inside Division, and BAT08 had assumed Command. E37 nursed water to E301 and E27 established a water supply via closest hydrant. Utilities had also been cut.

E301 entered approximately 5 - 10 feet into the home, extinguishing fire that had extended toward the Alpha and Bravo sides. Temperature readings did not exceed 300 degrees with the thermal imaging camera and visibility was good. It was determined that this was actually a 2-story home with a small living area upstairs on the Delta side. With the assistance of Q51, both crews began pulling ceiling and extinguishing any fire and hot spots. E301 had to exit the for one bottle change. After recycle, E301 remained exterior while E37 was extinguishing hot spots with help from Q51 and E27. RES20 had arrived and was Outside Division. The fire was soon declared under control. A PPV fan was placed at the Alpha door while overhaul began.

E27 and Q51 removed ceiling on the second floor while outside crews were cooling hot spots from the exterior.

An after action review was conducted and all units cleared except E301 and BAT302. The home was again searched for smoke and hot spots which were cooled. All smoke had dissipated and hot spots cooled.

The cause of the fire was most likely a heater near the Delta side door. The homeowner explained that he saw flames coming from the heater and catching the ceiling and surrounding items on fire as he was exiting the home. Outside Division reported abnormal wiring at the Delta/Charlie corner near a breaker box and an outdoor washer and dryer. The wiring in this area was exposed along with heavy charring on the backside of the heater. E301 picked up hose and equipment, started the decontamination process, and cleared.

[Battalion 302] BAT302 was dispatched to a light box alarm that was quickly upgraded to a structure fire. On arrival, BAT08 was already on scene and established Command. After a face to face with Command, I was asked to go to the house and get a better description of the house and fire conditions. As I walked down to the house, there was a decent amount of fire on the second floor being knocked down by a unit inside. Another unit ensuring the

exposed disconnect to the exterior washer and dryer were indeed off and had no power. I checked on the downed power lines that were reported to find this house to have an underground service, the only wire coming in overhead was Cat5 on the CD corner. I made it back to Command and reported these findings as well as letting him know the fire is under control. After the post incident review, all units were cleared except E301 and BAT302 to ensure extinguishment. We remained on scene to make sure everything was cold and wet. TCSO contacted the Fire Marshal's Office, but their services were not necessary as no one was hurt, the origin of fire was determined, and nothing seemed suspicious. All units cleared the call.

December 14 (B) – Structure Fire – AutoAid Received (Austin) – 8800 W US 290 Hwy

[Engine 301] E301 arrived on the scene and reported that "nothing is showing from the exterior; E301 will be investigating." SUP350 met the E301 officer at the apparatus and stated, "Fire is in the attic; smoke on the second floor." E301 notified dispatch and incoming units that it would be in Offensive Mode and stretching a line; there were reports of a fire in the attic. E301 made entry with light smoke on the first floor; E301 firefighters stretched the dry hoseline to the second floor. SUP350 informed E301 that attic access was in the garage, but he could not reach it. The entire second floor had substantial smoke due to the report of a fire in the attic and the smoke on the second floor. E301 firefighter made inspection holes in the ceiling. I do not see any heat, smoke, or fire from the inspection holes. E301 downgraded units to code 1. E301 located the attic and visually confirmed no fire, smoke, or heat. E301 remained on scene until BAT302 and Inside Division could identify the smoke's source.

[Truck 302] TK302 responded code 3 to a structure fire in ESD3. While responding, first unit on scene reported nothing showing from the exterior and that they would be in investigative mode. TK302 arrived on scene as second aerial unit and assumed Outside Truck. Units interior reported smoke and haze inside but nothing showing from the exterior. TK302 crew verified power and gas had been shut off and then opened gates on the Bravo side. TK302 crew checked the full exterior of the structure twice with the TICs and found no sign of heat in the eaves. Small amounts of smoke with an electrical odor could be seen from the second story window with interior crews having windows open to ventilate. TK302 reported to Command its findings and was directed to check all interior outlets with the TIC to see if the source could be from an electric outlet. TK302 was unable to locate any sign of heat on the second floor and then checked the first floor. After reporting back to command, TK302 assisted with turning the power back on to the structure and then checking the interior again with the power on. Nothing was found in the walls but while checking upstairs, TK302 found the heater in the upstairs hall bathroom blowing the same electrical burning odor found outside. E37 was in the attic with no sign of heat or smoke and found the ceiling heater that TK302 was checking on was not ducted out and had exposed wiring. TK302 and Command spoke with the homeowner and asked if the heater had been used and they stated they did not know they had a heater and thought it was a vent. The homeowner said it is used all the time. TK302 assisted E37 with unplugging the heater and vent in the bathroom. The thermostat to the AC was not on after the power was turned back on and the homeowner said they had the heater on earlier in the day and then turned on the AC. No breakers in the main panel or sub panel had been tripped and crews were not sure why the thermostat was not working. TK302 went to the sub panel with the homeowner and turned off the breakers to the air handler and compressor. With the breakers not properly labeled and all breakers 20 amp or smaller in the house sub panel, TK302 recommended that when the electrician comes to check the panel and breakers. TK302 crew went out of the structure to place equipment and gear back on the apparatus and was cleared off the call by Command.

[Battalion 302] BAT302 responded to a structure fire on El Rey. It was stated over the radio that there was a haze of smoke in the interior with no heat signatures from the TIC. BAT302 arrived on scene with all other units already on scene with their assignments. BAT302 went to meet with BAT08 who already assumed IC. When meeting with BAT08, he debriefed me on the situation. BAT08 stated he felt like there was an electrical issue and BAT302 could smell the odor from outside of the structure. The crews had already cut the main breakers and turned off the propane tank. Once it was determined there wasn't any active fire, we cut a few units loose but continued to investigate the situation. We talked with the homeowner about the situation and what we found.

The crews used horizontal ventilation to clear the smoke from the house. It was determined most of the smoke originated from the second story and that is where we focused our attention. We decided to turn the electricity back on to see if we could locate the source of the issue. An AFD unit went into the attic and TK302 went around the 2nd floor with the TIC. We discovered the heater/vent unit in the bathroom had a high temperature and we began to smell the odor again. The crews unplugged the heating/vent unit, but we could not rule out the AC air handler. The crews had checked the breakers, but none were popped. We turned off the breakers to the AC air handler and left the electricity on. We told the homeowner he would need to call an electrician, but he couldn't turn on the AC or heater/vent in the bathroom. We left the electricity on and then all units cleared.

December 19 (B) – Structure Fire – AutoAid Given (Westlake) – 803 Loma Linda

[Truck 302] TK302 responded to a structure fire in ESD9. On arrival, TK302 notified Command that TK302 was level 1 staged. Units on scene had advised fire was knocked down. Command had TK302 crew come to the scene and assist Inside Division with pulling ceiling and checking for extension. TK302 crew reported to Inside Division and pulled ceiling in the Bravo side with two rooms that had not been checked fully. No fire was found and TK302 found the ceiling was showing 170 degrees. TK302 made inspection holes and determined the heat was just being held in with the insulation. TK302 notified Inside Division and then was directed to pull ceiling in the living room. After enough area had been exposed, TK302 was directed to check the interior with gas monitor to allow crews to work without SCBA. TK302 found zero reading on CO and 0.5ppm on HCN. TK302 updated Command and Command had all crews come out to do a quick debrief before reducing units on scene. After debrief, Command cleared TK302 after all unneeded hose was loaded. TK302 assisted with loading hose and then cleared off the call.

[Battalion 302] BAT302 responded to a structure fire in Westlake. Upon arrival, BAT01 was on scene and had assumed Command. BAT302 went to the Command Post to see what was needed and he asked BAT302 to do a 360 of the structure. BAT302 completed the 360 and went back to the Command Post to give him an update. BAT302 reported to Command that the fire was knocked down and contained, but there was still smoke coming from the eaves and the pitch. The crews were doing an overhaul and pulling ceiling to look for extension. The crews were conducting horizontal ventilation to remove the smoke. After BAT302's pass on, BAT01 requested BAT302 to gather information about the homeowners because they were not home. BAT302 was able to gather this information from a neighbor and we contacted the neighbor of the situation. Once it was determined the fire was out, all the crews gathered for a debrief and Command began to clear some units. BAT302 cleared the scene and went AVLA.

December 22 (C) – Vehicle Fire – AutoAid Given (Austin) – 8509 Southwest Parkway

[Truck 302] TK302 was called out for a reported car fire with E37 on the scene. The initial request was for tank water transfer. Arrived to find a fully involved car off the side of the road with E37 on the scene with a line on the ground putting the fire out. TK302 pulled behind E37 and used E37 3-inch line to transfer water to E37. Crew off TK302 went to the scene and assisted E37 crew with overhaul and putting the fire out more. TK302 transferred 300 gallons of water. After the car was out and overhauled, APD called for a tow truck to remove the car off the road. TK302 then cleared the scene to get more water.

December 31 (B) – Trash Fire – AutoAid Received (Austin, CE-Bar, Westlake) – 8834 Chalk Knoll Dr

[Truck 302] TK302 responded code 3 to a structure fire. TK302 arrived on scene with BAT302. TK302 met with the occupants at the front of the structure and they stated the deck was on fire in the back and they could not extinguish it. TK302 did not see any smoke or fire from the front and TK302 notified Command that TK302 would be making access to the rear of the structure to investigate. TK302 crew made access to the rear of the structure with a smell of smoke. TK302 found the deck had a 2'x4' section with active flames burning on the bottom of the deck. A garden hose was nearby and TK302 was able to knock the fire down from underneath. TK302 notified Command that the fire had been knocked down and would be making access to the top of the deck to check. TK302 found no fire on the top of the deck but smoldering ashes of what appeared to be a melted trash container. TK302 began to put water from the top and canceled next in unit from pulling a line. TK302 was met at the rear of the structure by Command and units kept applying water to the area to fully extinguish the area. ESD9 units brought fire line tape and the area was roped off for safety. TK302 verified with Command nothing else was needed and TK302 cleared off the call.

[Battalion 302] BAT302 responded to a structure fire. Upon arrival, TK302 was on scene and went to investigate. BAT302 assumed Command and assigned TK302 to Inside Division while other units were arriving to the scene. TK302 reported there was active fire on the patio in the backyard and they were trying to extinguish it with a water hose. E903 was the next in unit and BAT302 asked them to pull a rackline. TK302 reported back that they had knocked down the fire. BAT302 told E903 to assist TK302 to look for extension. During this time, BAT302 reduced all units not on scene to Code 1. E37 and BAT902 arrived and I had BAT902 be Safety Officer and E37 standby at their unit. BAT902 advised the fire was contained and knocked down. BAT302 cancelled all other units not on scene. BAT302 had a face to face with BAT902 and TK302 to determine the extent of the fire. We went into mop up mode and BAT302 cleared E37. Once we determined there wasn't any active fire, all units cleared the scene.

**Aid Responses**

|                           | December  |           | 2024       |            |
|---------------------------|-----------|-----------|------------|------------|
|                           | Received  | Given To  | Received   | Given To   |
| Austin                    | 25        | 16        | 216        | 228        |
| Travis County ESD #1      | 0         | 0         | 0          | 1          |
| Pflugerville – TCESD #2   | 0         | 0         | 0          | 0          |
| Manchaca – TCESD #5       | 0         | 0         | 0          | 0          |
| Lake Travis FR – TCESD #6 | 1         | 1         | 13         | 14         |
| Pedernales – TCESD #8     | 0         | 0         | 0          | 10         |
| Westlake – TCESD #9       | 9         | 3         | 97         | 31         |
| CE-Bar – TCESD #10        | 1         | 0         | 2          | 5          |
| Travis County ESD #11     | 0         | 0         | 0          | 2          |
| Manor – TCESD #12         | 0         | 0         | 0          | 0          |
| Hays County               | 0         | 0         | 1          | 0          |
| <b>Total</b>              | <b>36</b> | <b>20</b> | <b>329</b> | <b>291</b> |

**Operations**

|                               | December | 2024   |
|-------------------------------|----------|--------|
| Unscheduled OT Hours          | 343      | 6,585  |
| Sick and Vacation Hours Taken | 1,117    | 10,642 |
| Injuries                      | 0        | 6      |
| Injuries Lost Time Hours      | 0        | 4,810  |
| Volunteer Hours Contributed   | 2        | 533    |

**Special Projects Status**

- The new EMS Training Coordinator, Joe Andrade, moved from A Shift into the position on January 5. We will welcome a new Firefighter on January 27 to fill the resulting open Operations position.
- Our new Assistant Fire Chief, Jason Ramsdell, moved from C Shift into the position on January 20. We will welcome a new Firefighter on January 27 to fill the resulting open Operations position. We have begun a promotions process for Lieutenant and Driver positions that this promotion has created.
- The EMS Response Time Compliance Summary was unavailable for December 2024.

Our 90<sup>th</sup> percentile response travel time this month was 9:57 for all incidents.

Our 50<sup>th</sup> percentile (median) response travel time this month was 4:36 for all incidents.

Our average response travel time this month was 5:48 for all incidents.

